

# RESPONSE TO INTERVENTION



# WHAT IS RTI?

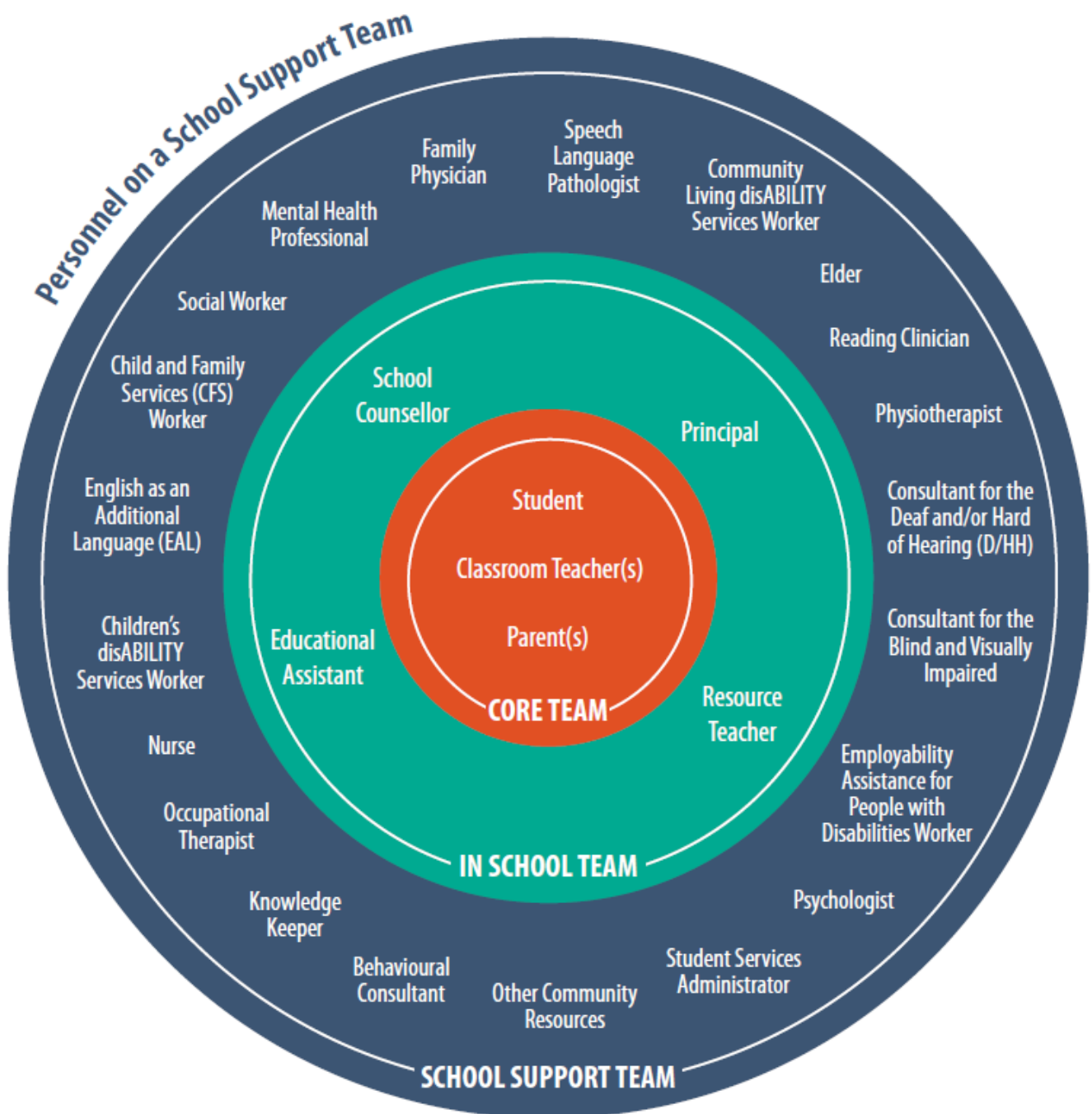


Response to intervention (RTI) aims to identify struggling students early on and give them the support they need to thrive in school. The word intervention is key to understanding what RTI is all about. The goal is for the school to intervene, or step in, and start helping before a student falls really far behind.



# CORE TEAM

At the heart of our program, we recognize that the student, parent, and classroom teacher form the core team. Using a consultative-collaborative approach, the remainder of the support team will work together to develop and implement effective and inclusive programming.



# SUPPORTING STUDENTS

The following systems are in place to ensure all students are supported in their learning:

<b>Class List meetings (June)</b>	Assists with transition from teacher to teacher. Individual strengths and needs discussed
<b>Transition Meetings (September)</b>	Opportunity for parents/students/teachers to discuss needs/strengths
<b>Familiarization with students through pupil files (September)</b>	Classroom and Resource Teachers become more familiar with student needs through pupil file
<b>Resource teacher meets with classroom teachers to go over APs and SSPs (September)</b>	Resource and Classroom Teachers meet to discuss/plan for students who have been already identified as having special learning needs; documentation is reviewed
<b>Differentiated Instruction/Classroom Management</b>	Teachers plan and manage with student needs in mind
<b>On-going Formative Assessment</b>	Assessment is on-going and reflective and students are part of that process
<b>Re-teaching, Intervention, Focus on Essential Learning Outcomes</b>	Instruction is driven by results of formative assessment and adjusted accordingly
<b>Teacher – Student conversations</b>	Teachers touch base with student on a regular basis to ask the student what they need or what they feel is getting in the way of learning



# SUPPORTING STUDENTS

<b>Teaching Teams meet to reflect on student progress</b>	Teachers meet to discuss student progress and to address concerns
<b>Teacher/Student/Parent communication when learning is not happening or when there are difficulties interfering with learning</b>	Email, phone calls, in-person meetings
<b>Resource Teacher Involvement</b>	Resource Teacher, together with Classroom Teacher, parents and student, do a student profile which looks at background information, strengths, needs, possible factors affecting learning
<b>Divisional Supports</b>	Clinicians and Student Services Specialist are consulted when difficulties are apparent. A formal referral process is in place.
<b>Partnership with outside supports</b>	Consultants, Mental Health, Department of Education, etc.
<b>Adaptation Profile</b>	An adaptation profile is a written form which identifies necessary and deliberate adaptations for the student to be able to meet grade level outcomes
<b>Modifications/SSP/IEP</b>	Student has some modifications in some or all of the subject/domains; An SSP/IEP addresses significant factors affecting learning
<b>Individualized Program</b>	Program is highly individualized with very exceptional needs and student is not working toward grade level outcomes

# SUPPORT STEPS

Student learning needs are addressed through the pro-active systems in place which are described above. If a student is still having difficulty learning, the following is also in place:

## STEP 1

- Teacher and student meet to identify what is working and what is not working. Strategies are discussed.
- Teacher and student make plan to address identified challenges and strategies are put into place
- Phone call to parent/guardian
- Continue monitoring

## STEP 3

- Further communication with parent/guardian
- Involvement of support team as needed/identified (Teacher, Parent/Guardian, School Administration, Home-School Support Worker, Guidance, Resource)
- Additional strategies identified and implemented
- Continue monitoring

## STEP 3

- Meeting with parent/guardian and school team to reassess and discuss plan/strategies
- Discuss involvement of Divisional support and support from outside agencies (Psychologist, Speech/Language, Mental Health, Family Doctor, etc.)
- After new data from Divisional support/outside agency support, review and revise plan
- Regular team meetings to monitor, review, and revise plan

